

# fabric selections, group 2 & 3

for allseating and now seating products

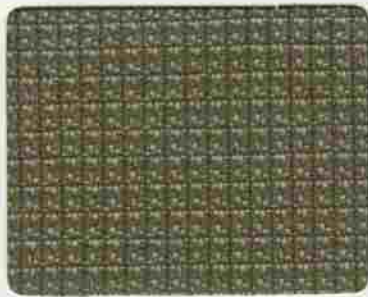
**now.**  
SEATING

ships in 72 hours

allseating 



F3-506 Classic Latin Olive



F3-504 Summer Green



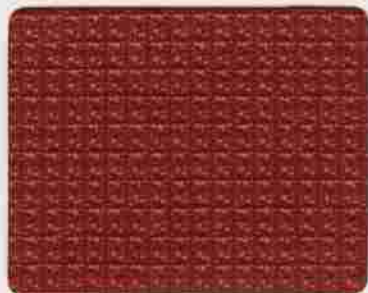
F3-508 Mocha Sand



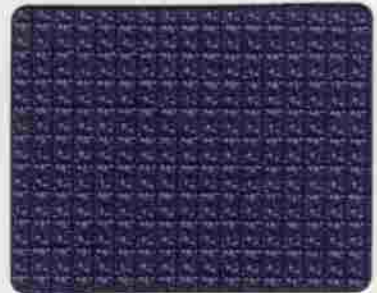
F3-203 Copper Gold



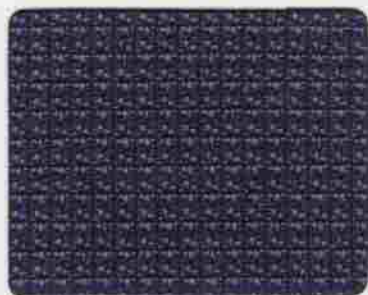
F3-103 Antique Tan



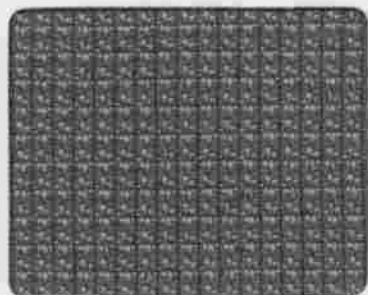
F3-301 Vibrant Red



F3-408 Great Blue



F3-405 Blue Streak



F3-805 Sharp Grey



F3-302 Burgundy



F3-604 Perfect Plum



F3-811 Clean Slate



F3-901 Dark Black



F2-PLC4 Potluck Black Cherry



F2-PLP1 Ocean



F2-PLP2 Palm



F2-PLM3 Moss



F2-PLS5 Salsa



F2-PLC6 Crimson



F2-PLC7 Cardinal



F2-SS8 Swango Salsa



F2-SC9 Cabernet



F2-SP10 Pewter



F2-SF11 Fairway



F2-SA12 Admiral



F2-SC13 Celery



F2-SC14 Cauldron



F3-27 Faux Suede Olive



F3-99 Graphite



F3-3006 Dusk Blue



F3-108 Port



F3-9009 Black



F3-833 Saddle



F3-808 Terracotta

DISCONTINUED

DISCONTINUED

## Technical Information

Group	Pattern	Width	Fibre Content	Weight	Abrasion Resistance	Light Fastness	Approx. Repeats	Cleaning Code	Fire Retardency
3	Classic	54"	100% Nylon	17 oz. / Linear Yard	110,000+ Double Rubs	L5; minimum 40 hrs.	N/A	W-S	Cal. 117 Passes
2	DISCONTINUED Burlap	54"	50% Polyester 50% Acrylic 100% Acrylic Backing	11.2 oz. / Linear Yard	30,000 Double Rubs	Class 4 40 hrs.	2.78" H 2.18" V	W-S	Cal. 117 Passes
2	DISCONTINUED Suede	54"	77% Olefin 23% Polyester 100% Acrylic Backing	17.6 oz. / Linear Yard	100,000 Double Rubs	Class 4 40 hrs.	0.25" H 3.43" V	W-S	Cal. 117 Passes
3	Faux Suede	54"	100% Polyester	13.28 oz. / Linear Yard	40,000+ Double Rubs	5 Une 40,187	N/A	(See below)	Cal. 117 Passes

### Faux Suede Cleaning Instructions

S- Solvent Cleaner. Shrinkage should be less than 2%. Do Not Use Bleach.

### Cautions

Avoid exposure to direct sunlight.