

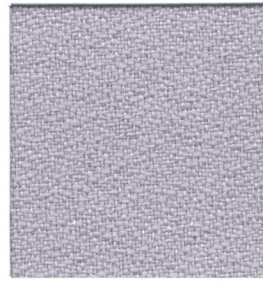
cosmopolitan fabric | grade one



Commerce 2001 slate



Commerce 2011 sponge



Commerce 2021 mauve



Commerce 2071 grey



Dune 2331 bright



Dune 2261 kamelos



Dune 2281 nectar



Dune 2291 hot sun



Dune 2251 haze



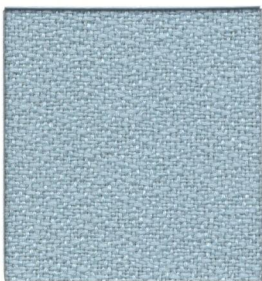
Dune 2271 gecho



Commerce 2041 moss



Commerce 2061 sand



Commerce 2051 gem



Dune 2321 mist



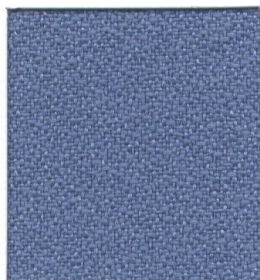
Commerce 2081 teal



Dune 2301 raven



Commerce 2031 frost



Commerce 2091 fjord



Dune 2311 deep night



Dune 2341 late

fabric specifications

Commerce

---

pattern	commerce
width	66" usable
content	100% polyester
weight	12 ± 1.00 oz./lin. yd.

---

performance

colorfastness to light AATCC-16E	class 5 at 40 hours
----------------------------------	---------------------

---

flammability

ASTM E-84	class 1 or A
state of CA. tech bulletin, 117 sec. E <small>(CS-191-53)</small>	passes

Dune

---

pattern	dune
width	66" usable
content	100% polyester
repeat	horizontal: 13.94", vertical: 16.44"
weight	11 ± 1.00 oz./lin. yd.

---

performance

breaking strength ASTM-D5034	warp: 160 lbs. min., fill: 110 lbs. min.
colorfastness to crocking AATCC-8	dry: class 4 min., wet: class 4 min.
colorfastness to light AATCC-16E	class 5 at 40 hours
abrasion resistance	decorative with full serviceability

---

flammability

ASTM E-84	class 1 or A
state of CA. tech bulletin, 117 sec. E <small>(CS-191-53)</small>	passes

\*All cosmopolitan fabrics are directional.  
Fabrics are applied vertically on cosmopolitan tiles.  
Dye lots may vary slightly from samples shown.