

tayco.  
work well.™

panelink  
grade two fabric



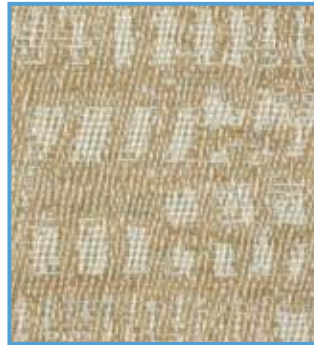
Asana 1002 raja



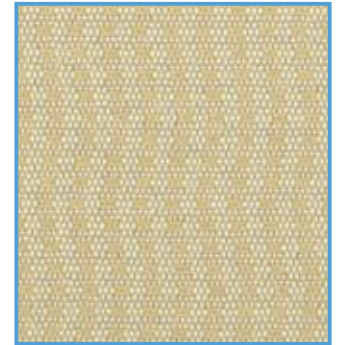
Rhythm & hues 1252 chimes



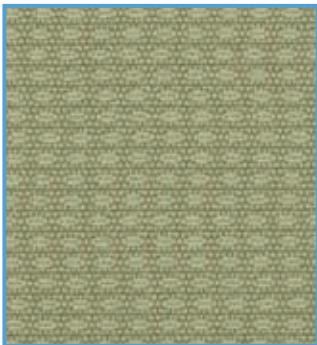
Colonnade 1522 southern exposure



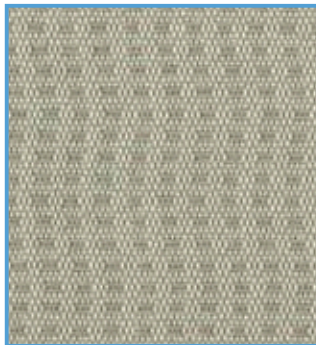
Rhythm & hues 1262 clapton



Asana 1012 bliss



Asana 1022 lotus



Asana 1032 cocoon



Colonnade 1532 inlay

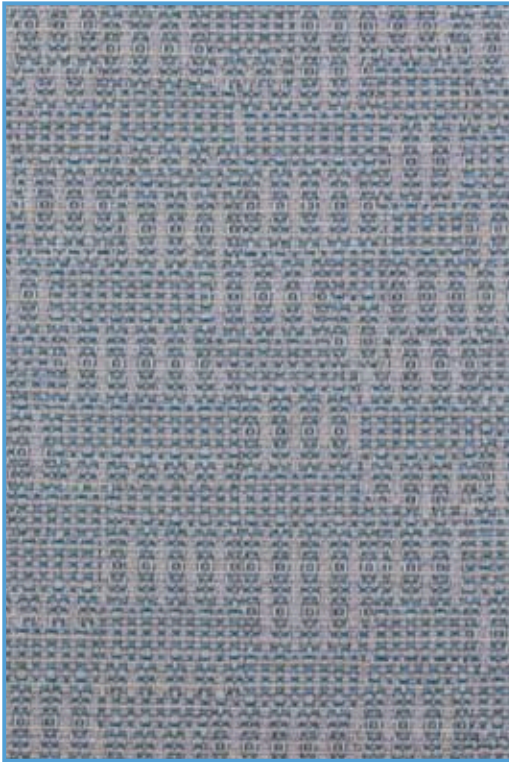


Rhythm & hues 1272 fats



Rhythm & hues 1292 buddy rich

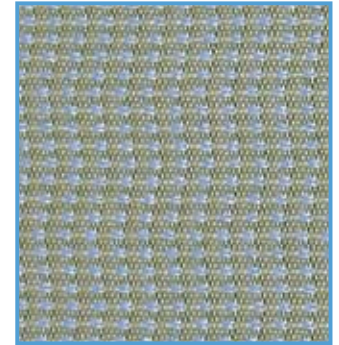
**NOTE:** Appearance of colors and/or finishes shown, will be dependent upon your monitor and your printer. Prior to ordering, we recommend you request an actual sample card of the material(s).



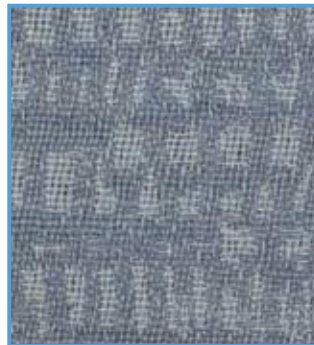
Colonnade 1542 skylight



Asana 1042 cosmos



Asana 1052 dharma



Rhythm & hues 1302 b.b. blue



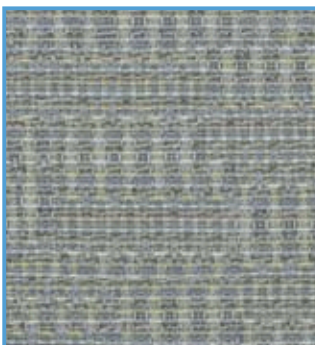
Colonnade 1552 mosaic



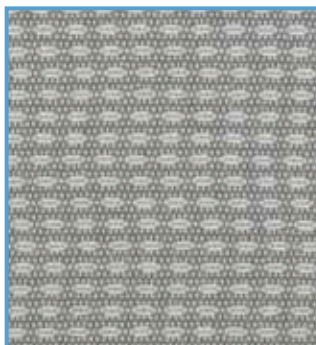
Rhythm & hues 1312 cadence



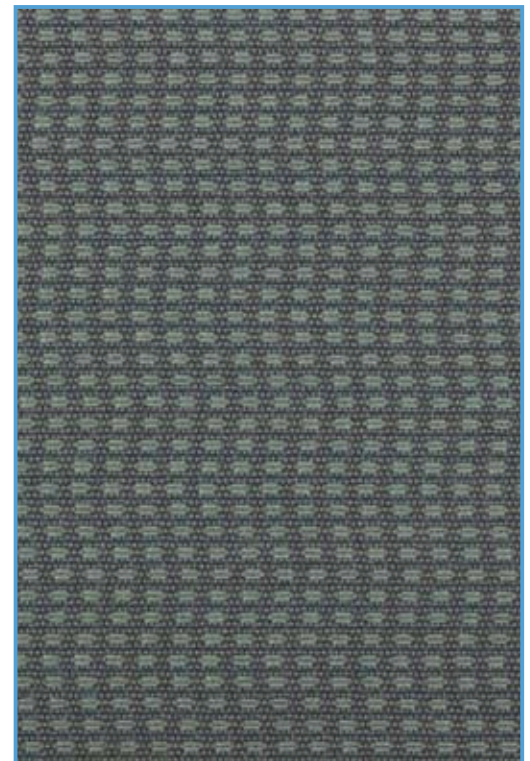
Rhythm & hues 1322 the blue note



Colonnade 1562 comice



Asana 1062 chakra



Asana 1072 hatha

**NOTE:** Appearance of colors and/or finishes shown, will be dependent upon your monitor and your printer. Prior to ordering, we recommend you request an actual sample card of the material(s).

Asana | 100% recycled

pattern	asana
width	66" usable
content	eco intelligent® 100% recycled polyester
repeat	horizontal: 0.16", vertical: 0.87"
weight	11.1 ± 1.00 oz./lin. yd.

performance

breaking strength ASTM-D5034	warp: 220 lbs. min., fill: 85 lbs. min.
colorfastness to crocking AATCC-8	dry: class 4 min., wet: class 4 min.
colorfastness to light AATCC-16E	class 5 at 40 hours
abrasion resistance	decorative with full serviceability

flammability

ASTM E-84	class 1 or A
state of CA. tech bulletin, 117 sec. E (CS-191-53)	passes

Colonnade

pattern	colonnade
width	66" usable
content	100% polyester
repeat	horizontal: 7.23", vertical: 11.47"
weight	10.1 ± 1.00 oz./lin. yd.

performance

breaking strength ASTM-D5034	warp: 145 lbs. min., Fill: 100 lbs. min.
colorfastness to crocking AATCC-8	dry: class 4 min., wet: class 4 min.
colorfastness to light AATCC-16E	class 5 at 40 hours
abrasion resistance	decorative with full serviceability

flammability

ASTM E-84	class 1 or A
state of CA. tech bulletin, 117 sec. E (CS-191-53)	passes

Rhythm and Hues

pattern	rhythm and hues
width	66" usable
content	100% polyester
repeat	horizontal: 14.46", vertical: 14.40"
weight	11.4 ± 1.00 oz./lin. yd.

performance

breaking strength ASTM-D5034	warp: 140 lbs. min., fill: 115 lbs. min.
colorfastness to crocking AATCC-8	dry: class 4 min., wet: class 4 min.
colorfastness to light AATCC-16E	class 5 at 40 hours
abrasion resistance	decorative with full serviceability

flammability

ASTM E-84	class 1 or A
state of CA. tech bulletin, 117 sec. E (CS-191-53)	passes



eco intelligent® is a registered trademark of a product or process designed to embody the intelligence of natural systems (such as nutrient cycling, interdependence, abundance, diversity, solar power, regeneration).

**NOTE: Appearance of colors and/or finishes shown, will be dependent upon your monitor and your printer. Prior to ordering, we recommend you request an actual sample card of the material(s).**

\*All grade two panelink fabrics are directional.

Directional fabrics will be applied horizontally on all panels if your order contains panels wider than 60". Directional fabrics will be applied vertically on all panels if your order contains panels higher than 66". Directional fabric will be applied vertically on all panels by default if your order or your previous matching order does not contain any panels wider than 60". Orders for a directional fabric can contain panels that are wider than 60" or higher than 66" but not both. Barring any other limitations, directional fabrics will be applied vertically to panels unless otherwise specified on your Purchase Order.